

SINCE 1968

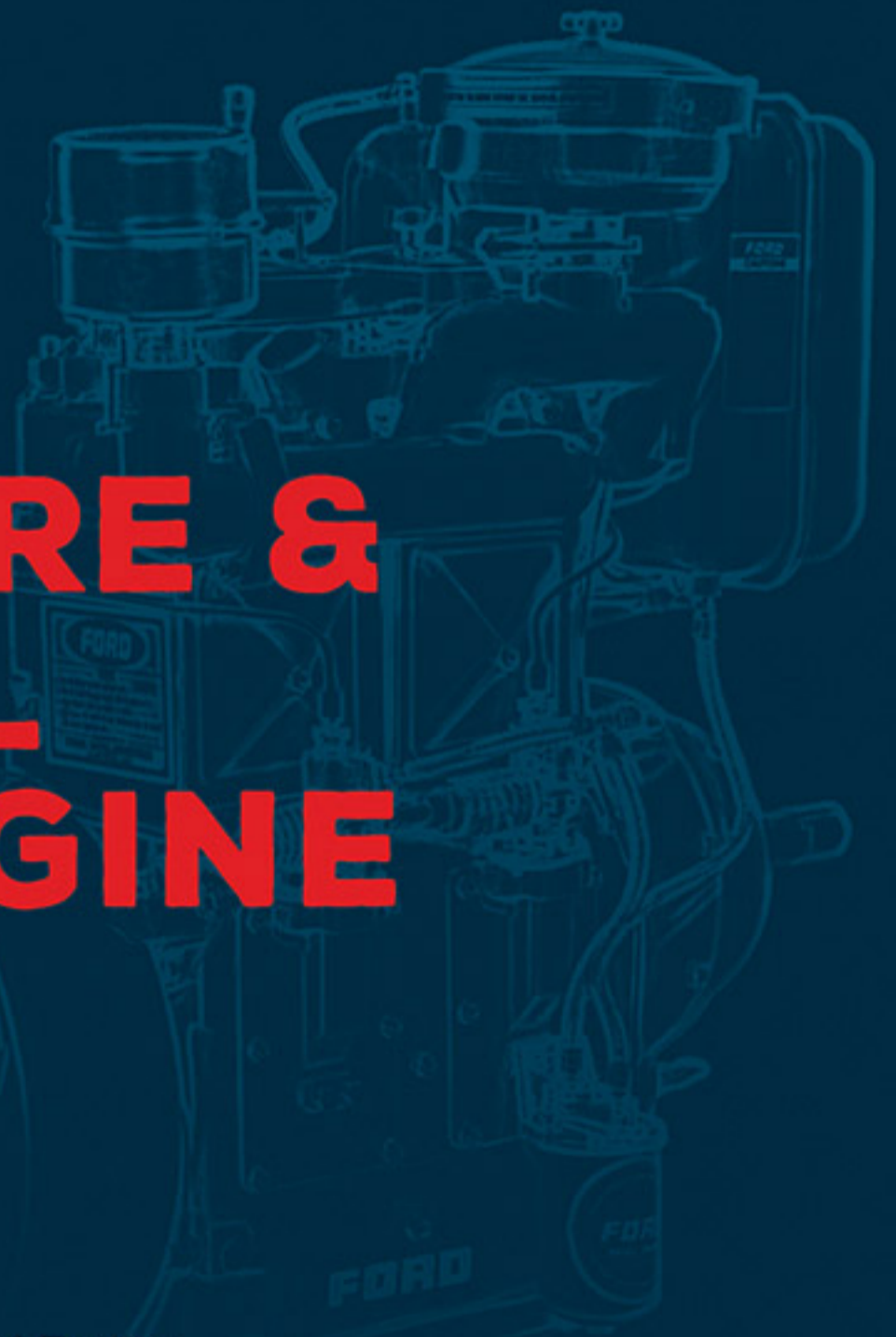
FORD[®]
DIESEL ENGINE

AGRICULTURE & INDUSTRIAL DIESEL ENGINE



Quality for
Sure

Manufacturer & Exporter of
Lister & Petter type Diesel Engine,
Generator Set, Water Pump,
Couple Set and Spare Parts





COMMITTED TO QUALITY. COMMITTED TO YOU.

We, Shree Satya Industries Started Manufacturing Of Diesel Engine In The Year Of 1968 Gradually We Expand Our Market To All Parts Of India In 1980's In The Brand Name Of "FORD" Which Is Registered Under Shree Satya Industries In The Year 1983.



Core purpose

To be a leader in the diesel engine industry by providing Quality products, Enhanced services, Relationship and Profitability.



Core value

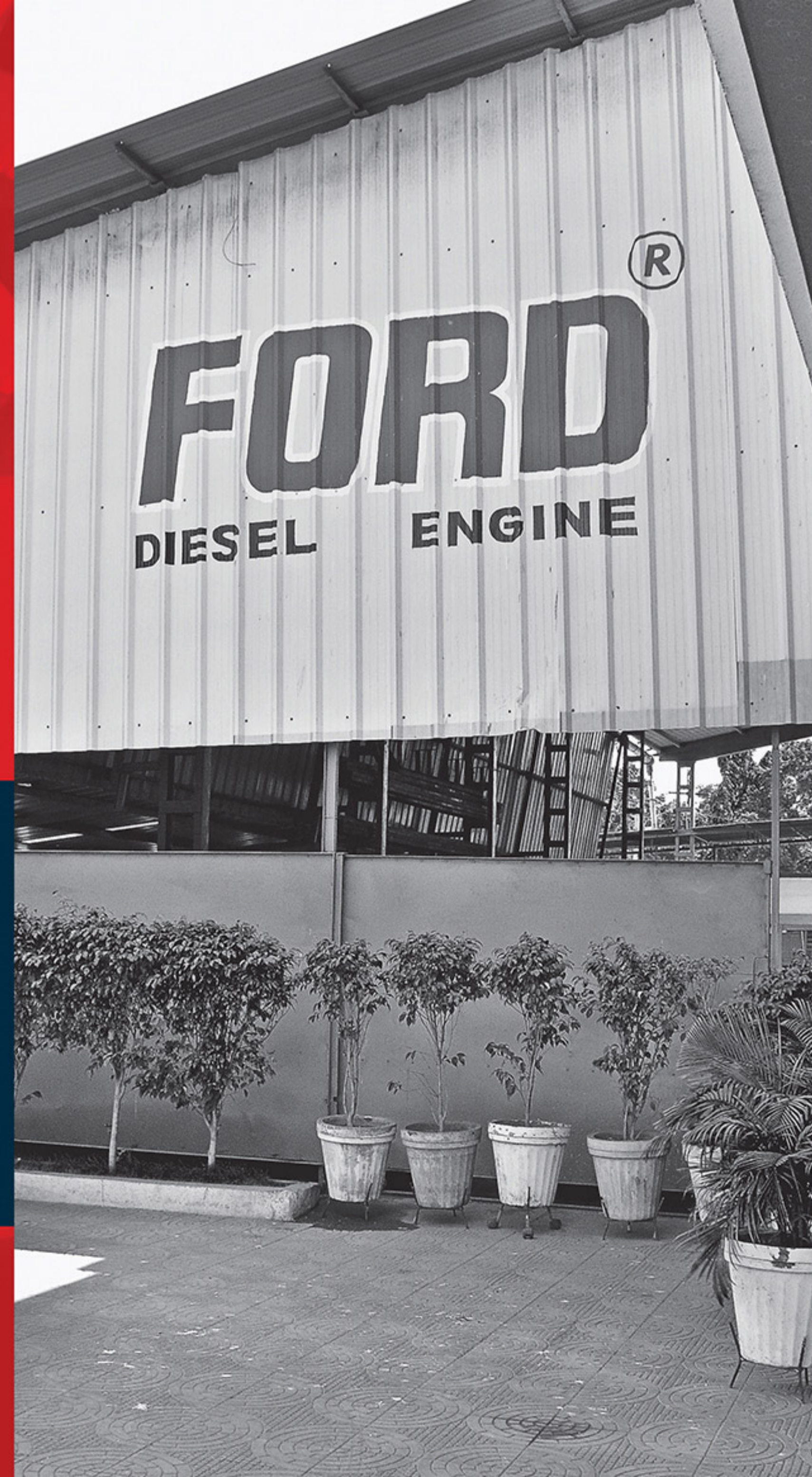
We believe in treating our customers with respect and faith. We grow through creativity, invention and innovation. We integrate honesty, integrity and business ethics into all aspects of our business functioning



Brand Promise

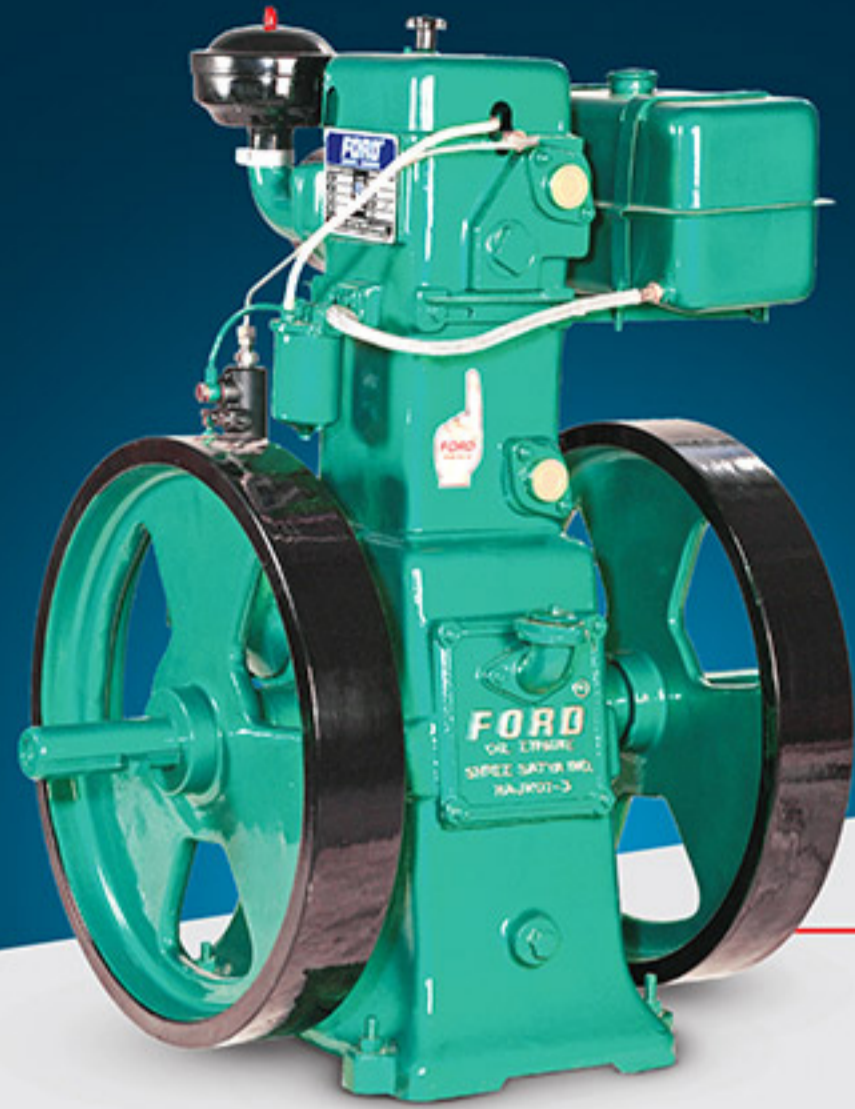
To provide quality Products that exceeds the expectations of our esteemed customers.

Today, We Have Well Organised Factory, Equipped With All Machineries To Manufacture Diesel Engine, Well Organised Staff And Workers. As A Team We Are All Marching Towards Making Best Engines.



Our products find their way to 20+ Countries

In 2000, We Started Exporting Our Engines To More Than 5 Countries. Within Few Years, We Are Leading Manufacturer And Exporter To More Than 20 Countries. Our Diesel Engines Come With Best Quality Componet.



LISTER TYPE

IS : 11170:1985

Diesel Engine

Lister type diesel engine has best in class fuel efficiency and low maintenance cost. Also it comes in various range of 6HP to 16HP along with upto 1000 RPM.

8 HP, 850 RPM



PETTER TYPE

IS : 11170:1985

Water Cool Diesel Engine

Petter type water cool diesel engine made with best quality components. Which provides you high performance with low maintenance and service.

6 HP to 12.5 HP



6 HP, 650 RPM



10 HP, 1000 RPM



14 HP, 1000 RPM



10 to 16 HP, 1000 RPM



5 HP 2600 RPM CUB



5 HP to 8 HP Comet



16 HP to 25 HP



12.5 HP to 15 HP

Model No.	SSL - 1	SSL - 2	SSL - 3	SSL - 4	SSL - 5	SSL - 6	SSL - 7
Rated Power (bhp/kw)	6 / 4.4	8 / 5.9	10 / 7.35	12 / 8.8	14 / 10.3	16 / 11.8	20 / 14.7
Rated Speed (RPM)	650	850	1000	1000	1000	1000	1000
Bore (mm)	114.3	114.3	120	127	127	130	130
Stroke (mm)	139.7	139.7	139.7	139.7	146	160	160
Type of Bearing	TRB	TRB	TRB	TRB	TRB	TRB	TRB
No. of Cylinder	ONE	ONE	ONE	ONE	ONE	ONE	ONE
Cubic Capacity per Cylinder	1433	1433	1580	1770	2026	2123	3353
S.F.C. (g/kwh) at Full Load	268	268	268	250	250	250	250
Nett Weight in Kg	300	300	320	380	400	400	420
Gross Weight in Kg	400	400	420	480	500	500	520
Packing (LxWxH) in CM	100 X 65 X 115	100 X 65 X 115	100 X 65 X 115	100 X 65 X 115	100 X 65 X 120	100 X 65 X 125	100 X 65 X 125

Model No.	SSPW - 1	SSPW - 2	SSPW - 3	SSPW - 4	SSPW - 5	SSPW - 6	SSPW - 7	SSPW - 8	SSPW - 9	SSPW - 10	SSPW - 11	SSPW - 12
Rated Power (bhp/kw)	3.5/2.6	5.0/3.7	5.0/3.7	6.5/4.8	8.0/5.9	8.0/5.9	10.0/7.35	12.5/9.2	15/11	16.0/11.8	20.0/14.7	25.0/18.4
Rated Speed (RPM)	1500	1500	1450	1500	1600	1500	1500	1500	1500	1500	1500	1500
Bore x Stroke (mm)	76 x 76	85 x 80	85 x 110	85 x 110	87.5 x 110	95 x 110	102 x 110	114.3 x 110	120.1 x 120	95 x 110	102 x 116	119.3 x 116
No. of Cylinder	one	one	one	one	one	one	one	one	one	one	two	two
Cubic Capacity Per Cylinder	345	345	555	555	660	660	950	1128	1128	660	950	1128
Compression Ratio (1)	18:1	18:1	17.9:1	17.9:1	15.9:1	15.9:1	16.6:1	15.7:1	15.7:1	15.6:1	16.6:1	15.7:1
S.F.C. (g/kwh) at Full Load	250	250	250	250	250	250	250	250	250	250	250	250
Type of Bearing	TRB	TRB	TRB	TRB	TRB	TRB	BB/TRB	BB/TRB	TRB	BB/TRB	BB/TRB	BB/TRB
ISI Market	-	Yes	Yes	Yes	Yes	Yes	-	-	-	-	-	-
Fuel	HSD	HSD	HSD	HSD	HSD	HSD	HSD	HSD	HSD	HSD	HSD	HSD
Nett Weight in kg	80	85	150	150	160	170	175	200	210	280	280	290
Gross Weight in kg	125	130	200	200	210	220	225	250	260	360	360	370
Torque at Rated Speed on Flywheel End (kg)	1.67	2.39	3.11	3.11	3.55	3.58	4.78	5.9	7.17	7.64	9.5	11.9
Packing case Size (LxWxH) in CM	65x53x70	65x53x70	66x54x84	66x54x84	66x54x84	66x54x84	66x54x90	66x54x90	66x54x96	66x70x92	66x70x92	66x70x92



PETTER TYPE

Air Cool Diesel Engine

Our domain expertise has enabled us to come up with a superior quality range of Air Cooled Diesel Engine. Moreover, we offer these diesel engines in various specifications for agricultural applications.

5 HP to 12.5 HP A/C



PETTER TYPE

Air Cool Concrete Mixture Diesel Engine

Air Cool Concrete Mixture Diesel Engines are Widely demanded by customers throughout the world. These diesel engines are available in different configurations for Various purpose in Construction Equipment Category.

Engine with Hydraulic Pump
6.5 to 12.5 Hp, 1000/1500 RPM



5 HP A/C (Portable)



6.5 HP to 12.5 Hp Bush Type



5 HP to 12.5 HP A/C
with Self Start



Engine use for
Hydraulic Concrete Mixture



5 HP to 12.5 Hp Long Shaft



6.5 HP to 12.5 HP A/C
with Hydraulic Pump



16 HP to 25 HP A/C D/C



4.5 HP Air Cool



4.5 HP Air Cool with 3x3 Pump



Engine use for Concrete Mixture



6.5 HP to 12.5 Hp Bush Type



5 HP Comet Type

WATER PUMP COUPLE SET

IS : 11170:1985



Diesel Pump Set

Our state of the art technology provides you quality and durability of Water pumps. Also it comes with sturdy base yet we keep it light weight which makes it easy to operate.

8 HP to 12.5 HP

5 HP to 10 HP
Air Cool Mud Pump Set



5 HP CUB

8 HP to 12.5 HP

5 HP to 8 HP Air Cool

5 HP to 7.5 HP

Engine Model No.	W/C	Type of Bearing	Type of Pump Casing	Suitbale Engine H.P	RPM	Pump Size In MM	EFFI. %	Head In Meter	Dicharge Lit./Sec	Duly Point		Impeller Size in MM
										Head In MTR.	Discharge In Lit./sec	
SSCWV - 1	W/C	TRB	Volute	3.5	1500	65X50	64	10 to 10	16 to 9	13	10	188
SSCWV - 11	W/C	TRB	Volute	5.0	1500	80 X 65	68	11 to 15.5	19 to 7	14	13	196
SSCWV - 14	W/C	TRB	Volute	5.0	1500	80 X 65	72	12 to 18	18 to 13	16	16	226
SSCWV - 15	W/C	TRB	Volute	5.0	1500	80 X 80	72	12 to 18	19 to 14	15	16.5	226
SSCWV - 18	W/C	TRB	Volute	6.5	1500	80 X 80	72	12 to 17	19 to 11	15	16.5	226
SSCWV - 19	W/C	TRB	Volute	6.5	1500	100 X 100	73	11 to 16	26 to 17	14	20	222
SSCWV - 25	W/C	TRB	Volute	8.0	1500	100 X 100	73	11 to 15.5	26 to 17	14	20	222
SSCWV - 28	W/C	TRB	Volute	10.0	1500	100 X 100	73	11 to 15.5	26 to 17	14	20	222



PUMP

IS : 6595:2002



For Irrigation & Agricultural

Ford pumps has wide range of applications like river, deep well, lake, ponds, etc. We offer you various range of pumps to fulfill your exact requirements.

Tractor Driven Pump



Centrifugal Pump/ Groove Pulley



Split Casing High Head Pump



Comet Pump



High Head Pump



Double Bearing Pump



Mud Pump



Centrifugal Pump



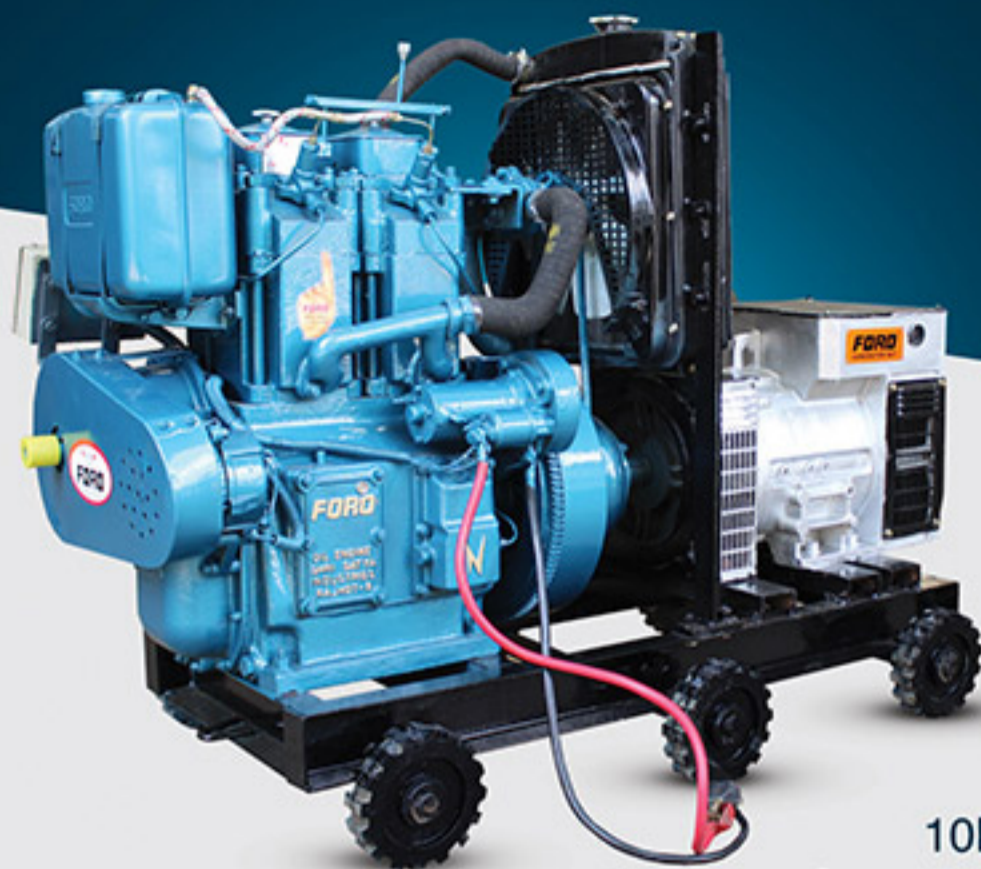
Glan Dori Pump



Centrifugal Pump High Head



Oil Seal Pump



GENERATOR SET

Water Cool

Our Generator Sets comes with durability, quiet operation, low maintenance and longer life span. This is the perfect choice for delivering standby and emergency power for industrial and commercial users.

10KVA to 20KVA D/C W/C
Genset, Self Start with Radiator



GENERATOR SET

Air Cool

We also have range of Air Cool Generator Sets. These are available in different configurations. Our expert quality controllers thoroughly check all the products on various parameters to ensure flawlessness.

10KVA to 20KVA D/C
Air Cool Gen Set with Blower



2.5KVA to 10KVA S/C Air Cool Gen Set



5KVA to 10KVA S/C W/C
Gen set with Radiator



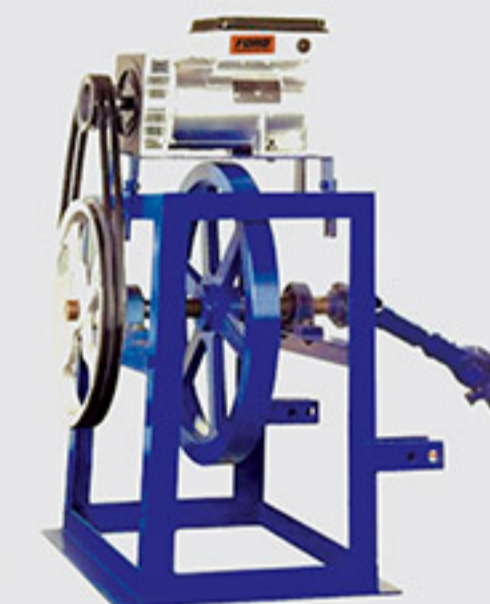
5KVA to 10KVA S/C W/C
Genset Selfstart with Radiator



2.5KVA to 10KVA S/C Air Cool Gen Set



5KVA to 10KVA S/C Lister Gen Set



PTO Shaft Alternator

Petter Type Air Cool / Water Cool Single Phase, 240 VOLT, 50 Hz Diesel Genset

Generator Set Model No.	A.C. Generator KVA / KW	Diesel Engine HP / KW	No. of Cylinder	RPM	AMP	Generator Set Net Wt.	Generator Set Gross Wt.
SS-1WR-1	2.25 / 2.25	5.0 / 3.7	ONE	1500	9.00	310	480
SS-1WR-2	3.5 / 3.5	6.5 / 4.8	ONE	1500	14.00	320	490
SS-1WR-3	5.0 / 5.0	8.0 / 5.9	ONE	1500	20.00	345	515
SS-1WR-4	6.0 / 6.0	10.0 / 7.35	ONE	1500	24.00	360	530
SS-1WR-5	7.5 / 7.5	12.5 / 9.2	ONE	1500	31.00	375	545
SS-1WR-6	10.0 / 10.0	16.0 / 11.8	TWO	1500	41.00	540	740
SS-1WR-7	12.5 / 12.5	20.0 / 14.7	TWO	1500	52.00	550	750
SS-1WR-8	15.0 / 15.0	25.0 / 18.5	TWO	1500	62.00	565	765

Petter Type Air Cool / Water Cool Three Phase, 415 VOLT, 50 Hz Diesel Genset

Generator Set Model No.	A.C. Generator KVA / KW	Diesel Engine HP / KW	No. of Cylinder	RPM	AMP	Generator Set Net Wt.	Generator Set Gross Wt.
SS-1WR-1	5.0 / 4.0	8.0 / 5.9	ONE	1500	7.00	345	515
SS-1WR-2	6.5 / 5.2	10.0 / 7.35	ONE	1500	9.00	360	530
SS-1WR-3	7.5 / 6.0	10.0 / 7.35	ONE	1500	10.00	375	545
SS-1WR-4	8.7 / 7.0	12.5 / 9.20	ONE	1500	12.00	385	555
SS-1WR-5	10.0 / 8.0	12.5 / 9.20	ONE	1500	13.50	390	560
SS-1WR-6	10.0 / 10.0	16.0 / 11.8	TWO	1500	17.00	550	750
SS-1WR-7	12.5 / 10.0	20.0 / 14.7	TWO	1500	20.50	560	760
SS-1WR-8	17.5 / 14.0	25.0 / 16.4	TWO	1500	24.00	570	770
SS-1WR-8	20.0 / 16.0	25.0 / 18.4	TWO	1500	27.50	590	790



PETROL START

Diesel / Kerosene Run Engine

These run engines are perfect solution and choice for consumers to overcome the problem of power scarcity and high diesel costs. It has Less fuel consumption yet provides you powerful performance.

IS : 7347
CMI -3722457



1.5 HP Engine



Engine with Spring Revolving Stand



Engine with Vibrator Needle



Engine with Spring Revolving Stand & Recoil



Couple Set On Base Plate



Engine with Stand

Model No.	H.P	RPM	Bore (mm)	Stroke (mm)	Fuel	Fuel tank	Output	Starting Method	Fuel Cons.	PTO shaft rotation	Compression Ratio	Spark Plug	Net Weight	Packing Size
SSI 55	1.5	3000	55	50	Petrol start Diesel/ kerosene	Petrol - 0.5L Diesel - 3.5L	1.1kw	Rope/ Recoil	700 g/kwh	Anticlock-wise	4.5:1	W160z2m (14)	17 kg	LxWxH 42x36x49 cm
SSI 70	3	3000	70	66.7	Petrol start Diesel Run	Petrol - 1.0L Diesel - 3.5L	2.2kw	Rope	700 g/kwh	Anticlock-wise	4.67:1	M45z8m (18)	26 kg	---



PETROL START

Diesel / Kerosene Run Engine

Our run engines have wide range of applications like Gensets, Pumpsets, Constructions etc. We manufactured it using high quality spare parts and components following standards and norms of the industry.

IS : 7347
CMI -3722457



3 HP Engine



Pump Set 3x3



Pump Set 2x2

Model No.	Pump Size	Rated RPM	Total Head in Meters												Discharge Lit/Mn.	Pump Set Net Wt. in Kg.
			6	7	8	9	10	11	12	13	14	15	16			
SSI-55C-1	75 x 75	3000	400	380	385	345	325	300	275	230	185	-	-	-	49.00	
SSI-55C-2	50 x 50	3000	465	435	400	370	340	305	275	255	235	195	160	29.00		

HOUSE HOLD

Generator

This is the trouble free - easy to use house hold Generator. We designed this keeping in consideration the variegated requirements of our respectable customers.

Genset 0.8 KVA



Model No.	Gen. KVA/KW	Engine Hp/KW	RPM	APM	Gen. Set Net Wt. in Kg
SSI-55G-1	1/1	1.5/1.1	3000	4	30.00



GENERATOR SET

Silent Genset with Canopy

We have emerged in offering our valuable customers a premium array of Generator Set. These offered generator sets are manufactured using high quality components that are procured from reliable vendors of market.

5 KVA to 20 KVA

Petter type aircool and watercool engine silent generator with canopy

For the complete satisfaction of the clients, we engage in the manufacturing, supplying, servicing and trading an exclusive range of Generator Set which is advance in technology and made up of high grade material.

Salient Features:

- » Rugged & Reliable, Best in class fuel efficiency
- » Very low vibrations and noise level
- » Easy serviceability
- » Compact and durable enclosure



Petter Engine Spare Parts



w/c cy. Block



a/c Head



w/c Head



Crank Case



Fly Wheel



Rocker Box



Housing



Fuel Filter



Gear Cover



Water Outlet



Fuel Tank Stand



Fuel Tank



Cooling Set



Pipe Set



Cam Cover



Governor Assembly



Connecting Rod



Cam Shaft



Air Cool Block



Crank Shaft



Fuel Pump



Injector



T.R. Bearing



C.R. Brass



Nozzle,
D.Valve Element



Piston, Ring & G. Pin



Ring Set



Liner



Handle



Valve & Gear Spring



In & Ex Valve With
Valve Guide



Tappet Set



Bush



Sleeve



Rocker & Tapper
Shaft



Push Rod Tube Set



Rocker Set



Oil Staner



Fly Wheel Key



W/C Gasket



A/C Copper Gasket



Lub. Oil Pump

Petter Engine Spare Parts



Silencer



Air Cleaner



Tractor Type
Silencer



Tractor Type
Air Cleaner



Gear Pump



Oil Seal



Element



Packing Kit



Ful Crum



Dust Cover



Top Packing Kit



V Groove Pulley

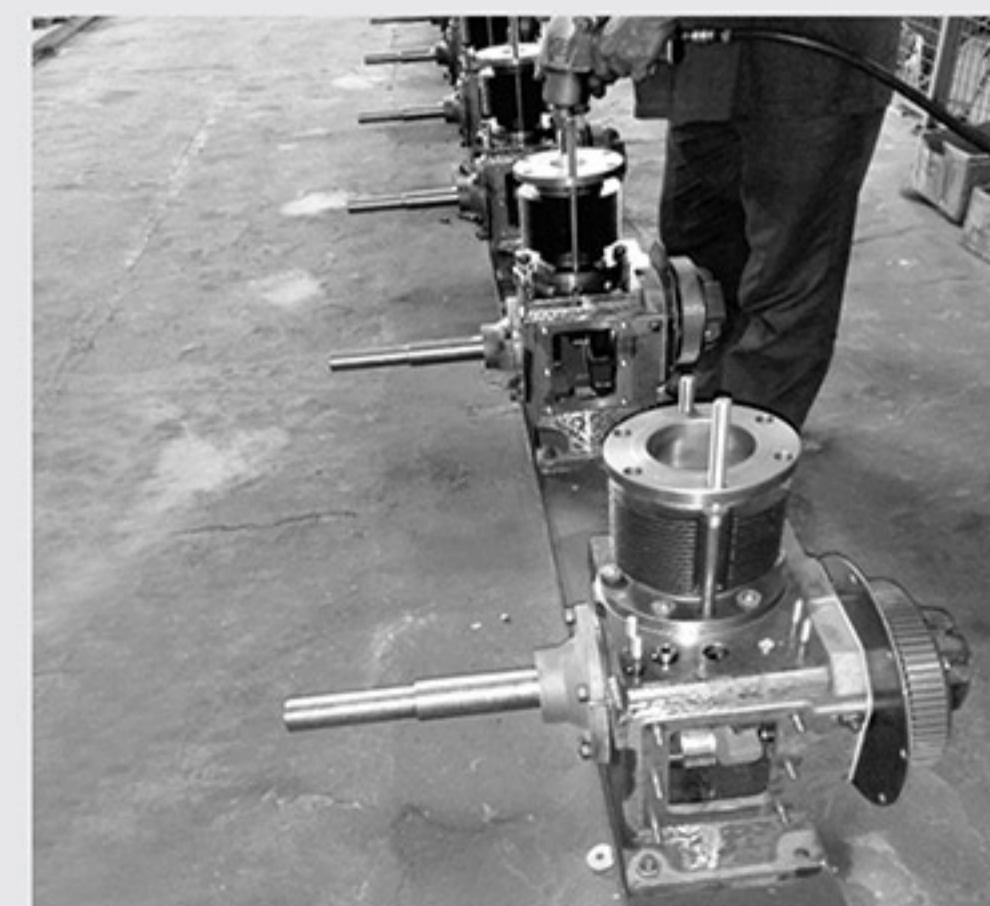
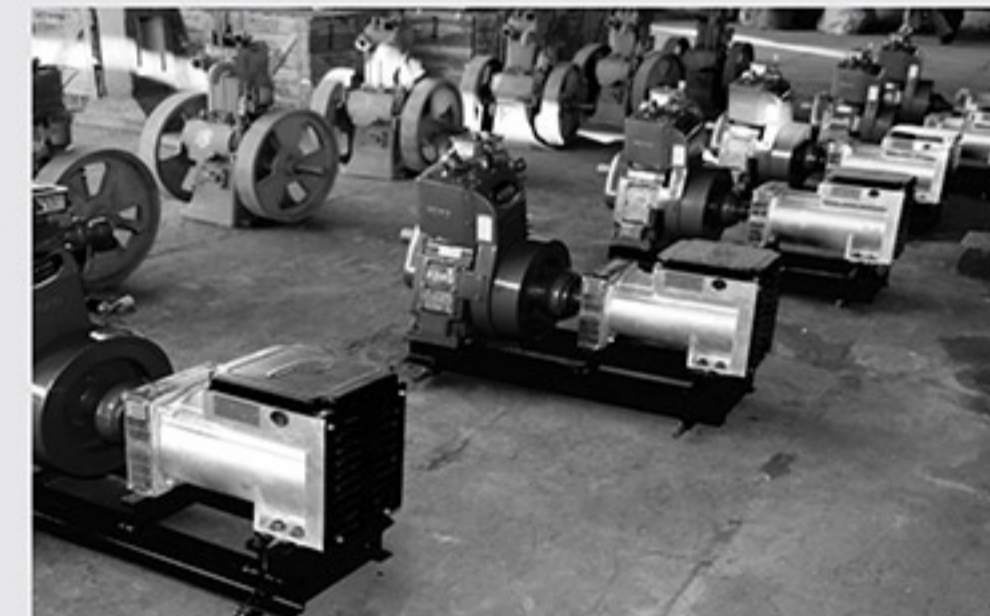
FORD GENUINE SPARES





Manufacturing Relationships. Distributing Quality.

We are acknowledged firm involved in manufacturing, trading and supplying extensive array of Diesel Engines, Generators and other Engine parts. These machines are known for their robust construction and long service life attributes among our clients.



Our Certifications

We are certified from very credible institutions of India. We awarded as One star Export House by Government of India. As well as we are ISO certified company.



Awarded by Government of India
For One Star Export House



Certification
ISO 9001 : 2008 Certified

Our Global Presence



- Morocco • Saudi Arabia • Senegal • Guatemala • Malaysia • Burkina Faso
- Iran • Mali • Somalia • Egypt • Syria • Iraq • Uganda • Nigeria
- Kenya • Zambia • Ghana • Honduras • Sudan and Counting

SINCE 1968

FORD[®]
DIESEL ENGINE

**TOP QUALITY
TRUSTED BRAND**

TT DIVYEN - 96388 66977

“FORD” Brand Regd Trade Mark No. - 404615B - For Agriculture Diesel Engine Category

Manufactured by & Exported by

SHREE SATYA INDUSTRIES



B/h Kuwadwa Road Police Station, Navagam
Road, Rajkot-360003, Gujarat, India.



fordsatya@gmail.com



+91 281 2701327, 2701721, 2707415



www.forddieselengine.co.in